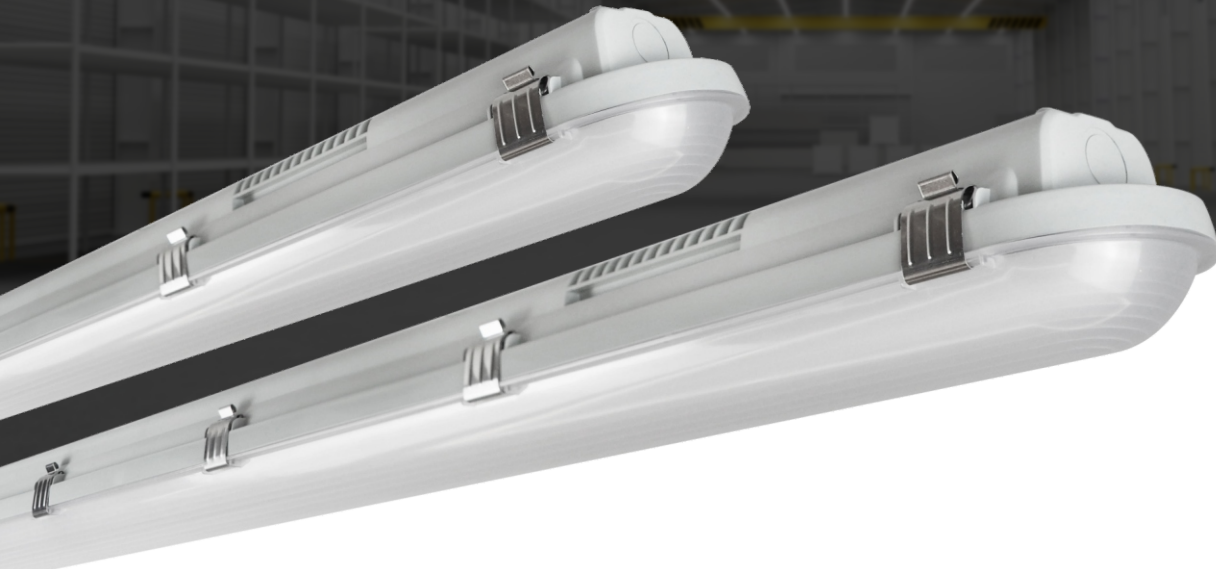


# LED IP65 NON-CORROSIVE BATTEN LIGHT FITTING



5FT 50W 6000LUMENS NON-CORROSIVE WAREHOUSE  
GARAGE WORKSHOP CEILING LIGHTING, WATER & DUST  
PROOF RATED, IMPACT RESISTANT, WALL OFFICE SCHOOL.  
REPLACES 5FT TWIN FLUORESCENT BATTENS.



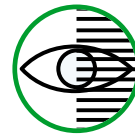
Lumens  
120Lm/W



IP Rating



Protection



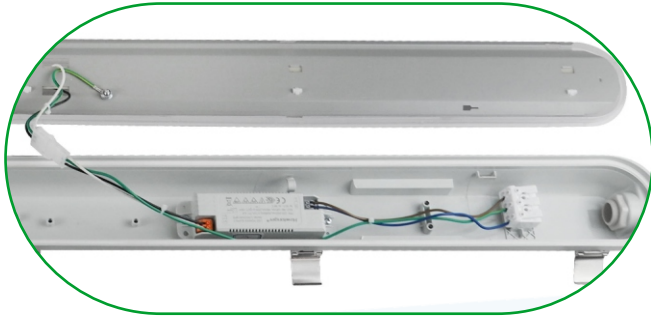
Flicker Free



Voltage  
220-240V



ideal for lighting car parks, garages,  
workshops and general industrial use.



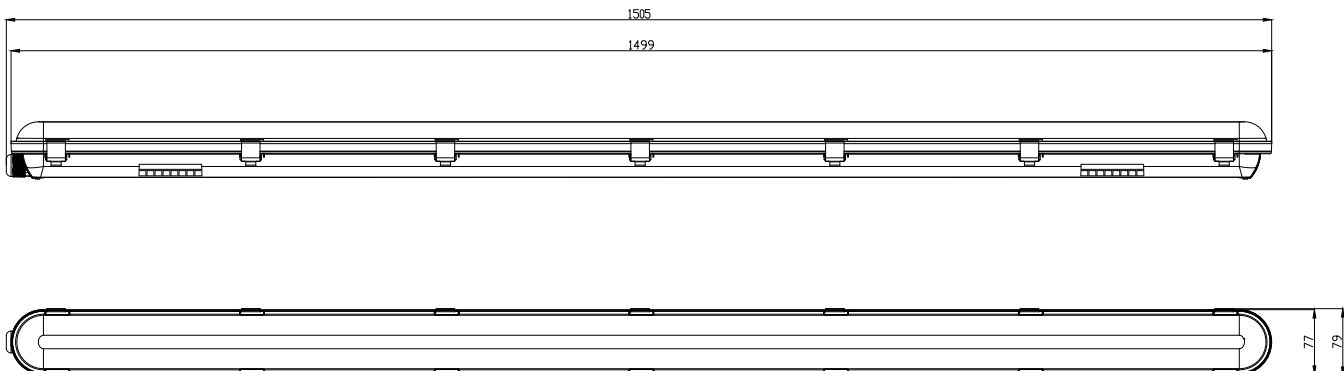
### Product Features

- Can be used internally or externally and due to its IP65 protection, ideal for lighting car parks, garages, workshops and general industrial use.
- The built in LED chips provides an extremely bright and even source of light achieving 120Lm/W. The build quality is extremely high making them perfect for installation anywhere.
- High quality, IK08, IP66 rated, non-corrosive, impact and chemical resistant, industrial LED luminaire.
- It features brackets for surface fixing (as pictured) to make installation simpler, knock out points on the rear if you would prefer to suspend the fitting via conduit.
- Sizes; 5ft and comes with a CCT of either 4000K or 6000K.

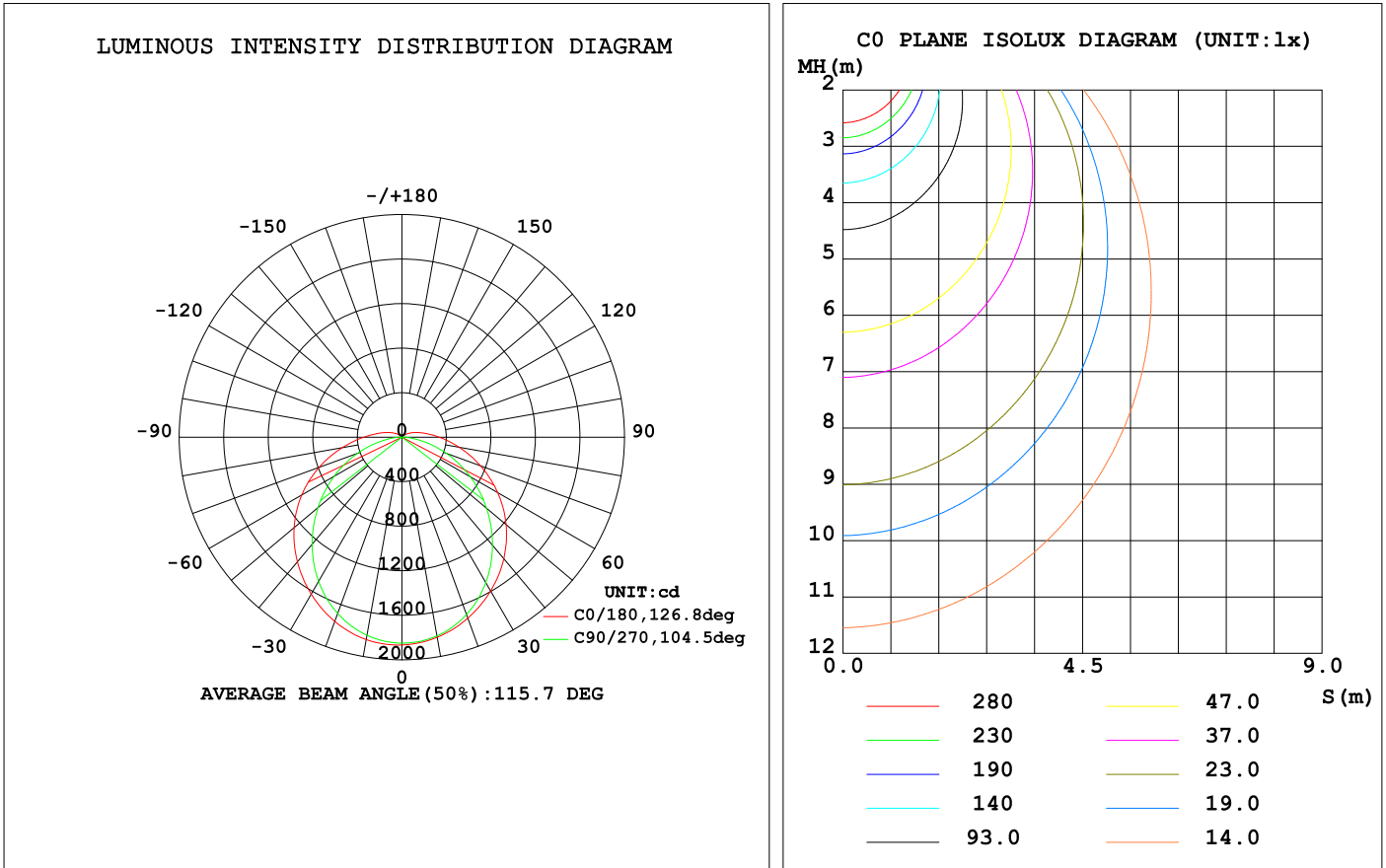
### Technical Specification:

Model No.	:	LG07M-15-50
Class type	:	Class I
Product Dimension	:	1500x79x68mm
Cover Material	:	PC Milky Cover
Base Material	:	PC
Input voltage	:	220-240V AC
Wattage	:	50W
Flicker/ Flicker Free	:	Flicker Free
Power factor	:	>0.9
Lumen	:	6000lm
EMC	:	Y
IP	:	65
IK	:	08
Input current/mA	:	250
Uout	:	65-107Vdc
Iout	:	510mA
LED PKG	:	SMD2835 0.5W 70-75lm
LED qty	:	120
M20 Cable Glands & Through Wiring	:	Yes
3 hole Terminal Blocks	:	Yes
Clips	:	301SS Included
Warranty	:	3 Years

### Dimensions Diagram



## Distribution Diagram



### Thank you for choosing ENER-J!

Customer satisfaction is our TOP priority, please let us know how you felt about your experience. Happy? We are so happy that you are pleased with our product. Feel free to express your newfound joy! Share your experience by writing a review.

Not Happy? If you are not fully satisfied with the item you received, have any problems like damages, or questions, please contact us. We typically respond within 24-48 hours.

## Stuck? Confused?

Contact our Technical Support team on:

T: +44 (0)2921 252 473 | E: support@ener-j.co.uk

Lines are open Mon - Fri (8am to 4pm)